



CLALLAM COUNTY AMATEUR RADIO CLUB

QTC
JULY 17

Field Day and Fireworks

Wow! Field day was a blast and the weather was about the best we ever had. As usual, we had some glitches as some shunts from last year were missing and Dennis had to make some new ones.

The bands opened up late Saturday afternoon but we discovered a problem with the antenna setup. This made getting contacts a bit more difficult as we could hear them but they could not hear us. The guys worked hard and it got a bit better but not as good as in the past. We have work to do for next year. Chuck, N7BV, came up with a great article that talked about portable tower setups, radios and antennas for Field Day use. We have some homework now

In a nutshell:

Band	Mode	QSOs	Pts	Pt/Q
3.5	LSB	61	61	1.0
7	LSB	74	74	1.0
14	PSK3	20	0	0.0
14	USB	31	31	1.0
21	USB	41	41	1.0
28	USB	3	3	1.0
Total	Both	230	210	0.9

*Score : 420

The GOTA tent was really busy all afternoon!

Band	Mode	QSOs	Pts	Pt/Q
3.5	LSB	1	1	1.0
7	CW	10	20	2.0
7	LSB	10	10	1.5
Total	Both	21	31	1.5

*Score : 62

* Scores are not yet official, taken from the N1MM logs and they have yet to be verified and uploaded to the ARRL.

Everyone I talked to had fun and really enjoyed the weekend. Bob (K6MBY) and Bill (K7WWP) set up a wireless mesh network (2.4ghz) and we had old fashioned telephones working on site using a Raspberry Pi as the KSU.

And I think the food was pretty good if I do say so myself... at least it was all gone! Except for the hot dogs, I am not doing hot dogs next year. The two of you will have to do without.

~ ~ ~ ~

With just a two day break, we went right into Fireworks sales. The set up crew was fantastic and we were ready to sell after we passed our inspection. We grossed over \$14k and we will not have our net until after TNT audits the books by the end of July. I am still waiting for a couple of receipts to come in for our expenses as well. Load out on the night of the 4th went very well and I thank everyone that showed up to help. A special shout out to Chuck, WA7EBH. On Tuesday evening of the 4th, Chuck was in a car crash at the intersection in front of Walmart. He was banged up but is home and doing OK. His truck not so much. I also want to thank the MANY people that helped all week and for setup and tear down crews.

Sheldon Koehler, N7XEI
CCARC Treasurer and Field Day Camp Cook.







QRM

CHICAGO'S AMERICAN, MONDAY, AUGUST 3, 1964

THEY'LL DO IT EVERY TIME :-:-:- by Hatlo



Get Your License Here!

**Technician and
General Class
October 7, 14, 21 2017**

VE Exam Oct 21, 1300

**Chuck N7BV
ARRL VE-L**

July Program

July's program is the presentation of the new web-site, and the presentation of the online membership database.

By Bill Peterson K7WWP

Articles needed for the QTC newsletter. This is your newsletter.

Tell us how you became interested in Ham Radio. What did you do over the summer (just like school) huh!

Did you put up a new antenna, buy a new radio? Tell us about it.

Did you try a new mode again tell us about it.

The more you submit the less blank space we will have!

Thanks, the staff!

CCARC QTC Newsletter

Just a little background on the QTC.

We use ccarcqtq@yahoo.com as a repository for information for the newsletter. So if you have something for the QTC, please send it to the yahoo address. Do not sent it to one of the editors as they will just have to turn around and resend it to the yahoo address.

Please make sure the article or information is complete. As we rotate editing the newsletter you cannot be sure which editor will be piecing the newsletter together.

Please remove as much formatting from within whatever program you are using if you know how, before sending it to ccarcqtq. We do not edit, except to change fonts to a standard non-serif font (Arial which is easier to read than Times Roman). We will run a spell checker.

When first conceived the editors were given free license, it still is that way. It was understood they would endeavor to include everything submitted, within reason. For instance, off color jokes etc. are not going to be printed. Thanks

Have an idea for a club program?
Pass them along to the members
of the program committee.

Thanks.

2 METER NETS

CCARC :

Every Thursday 7:00 pm on the W7FEL Repeater.

ARES/RACES:

Every Tuesday except 1st Tuesday of the month at 7:00 pm on W7FEL Repeater.

W7FEL Repeater: 146.76 MHz, offset down 600 KHz. with a tone of 100 Hz.

W7RJW "Net" Working

Some local nets to listen in on/participate in. This is one good way to learn how we communicate on the airwaves as amateur (ham) radio operators. I spent a year just listening to a couple of these nets and how experienced operators talk to each other, before I even tried for my Technician license. It REALLY helped me a lot. I strongly recommend doing this on a regular basis. Enjoy!

Sunday:

LDS (Latter Day Saints) Emergency Net (you don't have to be a member to participate) 6pm on 146.760

Monday:

Elwha Emergency Net 5:30 pm On 146.760
WARA (West Coast Amateur Radio Association)
Club Net (Victoria, BC Canada) at 7pm on 146.840

Tuesday:

ARES (Amateur Radio Emergency Services) Net
7pm on 146.760 (except for the first Tuesday of the month, when ARES meets at the Clallam County Courthouse)

Wednesday:

WARA (West Coast Amateur Radio Association)
Emergency Net 7pm on 146.840 Simplex Net immediately following: on 146.580

Thursday:

CCARC (Clallam County Amateur Radio Club) Net 7pm 146.760

W7RJW Rebecca J. Winters

**What's new on Ham Nation?**

<http://twit.tv/hn>

Check out the new format.

Have a cup of coffee, relax and watch one.

FOR SALE or TRADE

~~~~~

~~~~~

~~~~~

***'Mind Benders'***

The CCARC New Letter Staff is sad to report that the 'Mind Bender/Brain Buster/Head Hurter' column will no longer appear in the monthly news letter. The creator/contributing author has suffered a severe/irreversible head trauma – a *myoldcranial infraction* (a condition common with Psycho-Ceramics (Crack-Pots)) – this condition is most commonly referred to as a 'Brain Phart' – very similar in nature to an over exuberant Jocks' -- 'Pulled Hammy'/torn PCL (Posterior Cruciate Ligament) type injury – very painful and debilitating.

There is a very long and arduous recovery process for this type of head injury – requiring complete 'Laziness' on the part of the patient. The only known cure being complete physical and mental relaxation – accompanied by ample and continuously administered doses of snuggling/cuddling/giggling by a house full of great grand children !!!

We apologize for any inconvenience this event may cause our readers.

Thank you – the CCARC News Letter Staff.

Answer to last months 'Head Hurter'--

The license plate -- 'AMIYY4U' -- there may be additional answers but I figured it to mean:-

***Am I too Wise for You.***



## Back to the Past

Chuck N7BV

After many years away from the Mike and Key Field Day operations I decided to return. I made this decision last summer after a third year of not having time to make any contacts at FD here. I had previously done Field Day with the M&K for some 10 years before I moved up here and for a few years after. I have been a member of the M&K for 21 years.

The M&K FD operation is at Fort Flagler State Park on Indian Island about 1.5 hours from here. Although to some extent it is like two FD's SSB/VHF and CW because of the one thousand feet of separation between them. For reference from where CCARC puts up the tower to the large grassy area to the north, where we pitched one rainy year in the past, is only 450ft of separation.

The HF-SSB/VHF is on the 'bluff' which is 100' above the Puget Sound giving them a real low angle of take-off. CW is right above the log jam on the beach below the SSB'ers. There is a bit of interference sometimes, but it is usually sorted out with filters and coax stubs; or in a worst case convincing someone to bring a different rig next year! Unlike here the M&K supplies some antennas, some operating tents/towers/masts, everything else is personal.

This year there were nine persons setting up CW beach; after the tent went up, unloading all equipment boxes, antennas were laid out and assembled; then three short towers and antennas were put up and lastly a 68' 80m vertical went up. The antennas consists of a Hygain 4el 20m beam, a 4el homebrew 15m beam (mounted vertically), a 2el 40m beam mounted at 45 degrees (to reduce ground effects) and lastly the 80m vertical. By 1600 we decided to take a break for showers and clean up for the evening potluck dinner.

Well fed, we went back down to CW beach to test all equipment under power, and made some minor cable adjustments.

Saturday began with a nice breakfast of scrambled eggs, bacon, biscuits and gravy, with fresh cantaloupe and for those seeking a sugar high, Costco muffins and other pastries.

Down to CW beach - pickup and finish putting away things from setup. We reviewed the schedule – 2hrs on and 4hrs off. You first started on the right hand radio 15/40m and after an hour you moved to the left hand radio 20/80m. I had the first shift on 20m, and then off for four hours. Propagation seem normal for this time in the sunspot cycle, put 47 QSO's in the log.

Oddly we made more Q's on 40 than 20 and the combined low bands were higher than the combined high bands.

| Band  | CW BEACH |      |      |
|-------|----------|------|------|
|       | QSOs     | Pts  | Pt/Q |
| 3.5   | 319      | 638  | 2.0  |
| 7     | 652      | 1304 | 2.0  |
| 14    | 595      | 1190 | 2.0  |
| 21    | 225      | 450  | 2.0  |
| Total | 1791     | 3582 | 2.0  |

It was nice being with the old crowd again and operating by BIC – Butt In Chair!



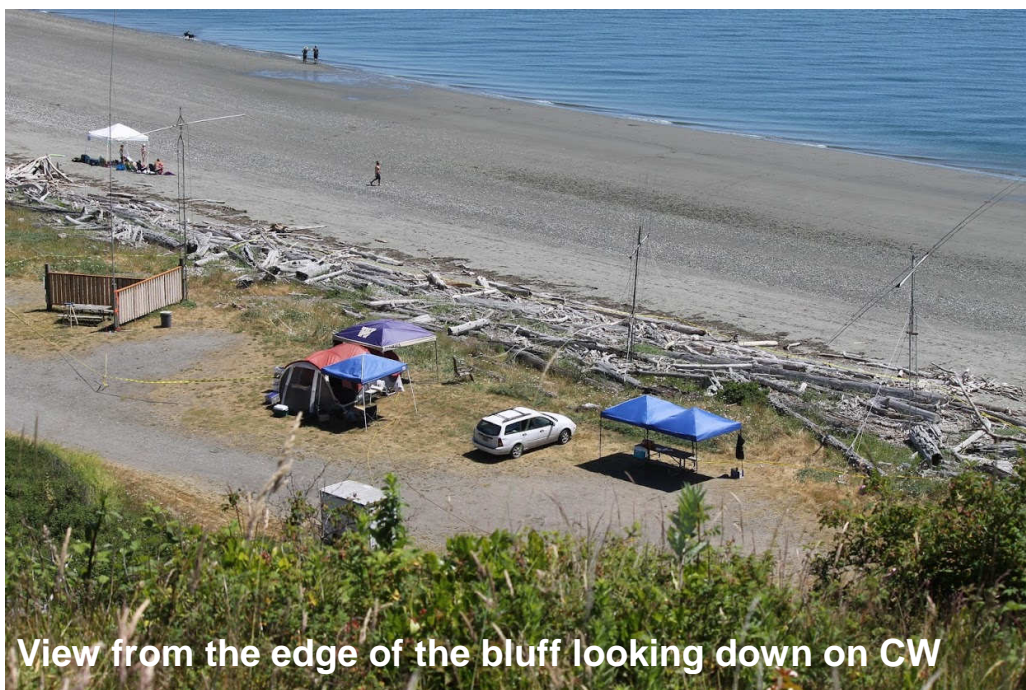


68ft 80m Vertical .... 20m 4el beam



4el vertical 15m beam

2el 40m beam



View from the edge of the bluff looking down on CW

**Field Day Antenna Plotting****by Michael, N7WA (M&K Editor)**

Tucked away on page 46 of the June 2017 QST was a small article box that I missed last month. (It was inserted in an article about rhombi's - something I don't have room for.) Returning from Field Day after joining us on CW Beach, Randy K7TQ brought the article to my attention. The author, Jim WU0I had geo-coded every ham, by address, in the USA and then created an algorithm to plot the data based on a home location. The idea was to show where were the majority of hams relative to that home location. He turned it into a web page that anybody can access. <http://www.deloach.net/PointYourFieldDayAntenna/>

I used the site to plot from Fort Flagler. What it shows is that the major population centers from Fort Flagler are east and south. The colors represent the distance of those population centers. Of course, many hams leave their home addresses to do Field Day but it's expected the data is still fairly valid.

East and south? Sounds pretty obvious I know. However, there may be a couple take-aways for this. On CW Beach, we mainly beam east and never move the antenna. We might want to consider moving the antennas south occasionally (15-20 minutes each hour) to maximize our capture of stations to the south.

On the bluff, you may want to ask if a rotator is really much use? If you find yourselves pointing anywhere but 90 or 165 degrees, you're probably not firing to maximum effect. (Remember those HF beams probably have a 20-30 degree beamwidth). Dean N7XS (40m) probably has the best idea. Two antennas, both lined up on those major population centers It's an interesting exercise and useful to think about

((Editors Note: If you want to run Clallam County Fairground, the coordinates are LAT 48.11706; Lon -123.47939))

~ ~ ~ ~ ~

**Northwest DX Convention****by Michael, N7WA (M&K Editor)**

Don't forget about the DX Convention August 4-6. This year it will be held at the downtown Red Lion in Spokane sponsored by the Spokane DX Association and the Idaho DX Association. You can go for the day or make it a weekend. You can just go for programs or do the full meal deal (Saturday Banquets and Sunday Breakfast). If you are interested in DXing or Contesting, these are your peers. They would love to meet you.

~ ~ ~ ~ ~



Glen WA6RQW, forwarded this MOD for the FT-847 to open up the rigs frequency range in order to cover the MARS frequencies.

From: service <service@burghardttradiorepair.com>  
Sent: Wednesday, May 17, 2017 9:37 AM  
To: GLEN  
Subject: Re: Yaesu FT847

Hi Glen (WA6RWQ),

Good to hear from you. Attached is the MARS MOD of the FT-847. We can do it for you for \$112.50 plus freight or you could do it yourself.

TNX & 73

Jim Smith (W0MJY)  
Burghardt Radio Repair Inc  
1320 13th Ave SE - Unit 48  
Watertown, SD 57201  
Tele(605) 886-7314  
Cell (605) 880-4769  
<http://www.burghardttradiorepair.com>  
[service@burghardttradiorepair.com](mailto:service@burghardttradiorepair.com)

Extending the transmit range  
Remove bottom cover..  
near battery there are 6 solder pads numbered 1 thru 6....  
pad 1 is already shorted with a chip resistor.....  
short pads 2 and 3 with solder...  
check pad 6 and if it has a chip resistor on it ...  
remove it...  
this one has to be removed to go out of band on hf and 6m.....  
replace cover and turn on radio while holding in the lock and fast buttons....  
this resets micro and you will also lose all your memories that you have entered...  
you will have to reprogram these....  
TX coverage will be 1.8-76mhz with no gaps...  
DO NOT TX BETWEEN 30-36MHZ -- not only is it illegal, but you may damage the HF PA.

**Treasurers Report for June 2017**

Due to a hard drive crash, Quickbooks has not yet been re-installed and backup restored. Below is the bank account balances for July 1<sup>st</sup>: Almost finished...

**Bank Account Balances 7/1/2017**

|          |                |
|----------|----------------|
| Checking | 4936.07        |
| Savings  | 3029.14        |
| CD       | <u>1037.98</u> |
| Total    | 9003.19        |

|             |        |
|-------------|--------|
| June income | 961.33 |
|-------------|--------|

|                     |        |
|---------------------|--------|
| Fireworks income    | 771.33 |
| Field Day donations | 155.00 |
| Misc item sales     | 15.00  |
| Dues paid           | 20.00  |

|               |        |
|---------------|--------|
| June expenses | 688.53 |
|---------------|--------|

|                    |        |
|--------------------|--------|
| Fireworks expenses | 93.36  |
| Field Day expenses | 251.31 |
| Tower expenses     | 140.11 |
| DNR lease          | 100.00 |
| PO box fee         | 64.00  |
| Trailer tabs       | 38.75  |

**Sheldon Koehler, N7XEI**  
**CCARC Treasurer**

**No minutes received for June meetings.**



### CCARC Standing Committees

**VE Education and Training:** Chuck Jones N7BV

**Field Day Co-Chairs:** Al Fisk KD7TFK, Sheldon Koehler N7XEI, Linda Montelius KG7WMS, Ray Montelius KG7WNB

**Health and Welfare:** Nita Lyman KE7DRT

**Membership Chair:** Sheldon Koehler N7XEI

**Net Coordinator:** Mike Rice KF7VZZ

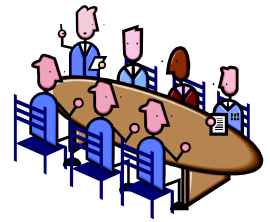
**Program Co-Chairs:** Bruce O'Rourke WA7CCC, Bill Peterson K7WWP, Tom Pysher K7YSH

**Public Relations:** Bill McPherson W6JEQ, Bruce Reiter KD7WBM

**Publications (Newsletter):** Chuck Jones N7BV, Herm Halbach KG7WMZ

**Technical Committee Coordinator:** Doug Welcker, WB4KGY, Bob Sampson K6MBY, Bill Peterson K7WWP, Merrill Terpstra KA7FAM

**Web Site Administrators:** Sheldon Koehler N7XEI, Mike Rice KF7VZZ, Bill Peterson K7WWP



### CCARC Special Committees

**Hamfest Table:** Mark Ellington K7MAE, Doug Welcker WB4KGY, Andrew Rowland KF7QYL

**Trailer:** Mark Ellington K7MAE, Charlie Brown WA4DFT, Andrew Rowland KF7QYL, Bruce O'Rourke WA7CCC, Glen Muir WA6RQW

**Fireworks:** Nita Lyman KE7DRT, Ray Montelius KG7WNB, Bruce O'Rourke WA7CCC

**NO SECRETARY REPORTS RECEIVED FOR THE JUNE GENERAL OR BOARD MEETING**

### **From the Editor:**

A thank you to all who contributed to this newsletter.

Glen WA6RQW  
Paula K7PAX  
Sheldon N7XEI

Sorry If I missed someone.

Tks. 73, Chuck N7BV

**NEXT YL Luncheon****14 July 2017****1130AM****Gordys Pasta and Pizza****1123 E. First St.****Port Angeles**

**Find us on the web at**  
**www.olyham.net**  
**Check it out. Lots of**  
**information about ham**  
**radio in Clallam County!**

**2017 - CCARC Ladies Luncheon Schedule**

**Reservations are made for 11:30 - 2nd Friday of each month**

July - Gordys Pasta and Pizza - 1123 E. First St. - Port Angeles

August - Mariners - 609 W. Washington - Sequim

September - Cafe Garden - 1506 East 1st St - Port Angeles

October - Paradise - 703 No. Sequim Ave - Sequim

November - Chestnut Cottage - 929 E. Front - Port Angeles

December - Cedars at Dungeness - 1965 Woodcock Rd. - Sequim

| Description                                        | Time/Date                      | Location                                                           | Contact                          |
|----------------------------------------------------|--------------------------------|--------------------------------------------------------------------|----------------------------------|
| Clallam County ARES/RACES meeting                  | 7 pm, 1st Tue of every month   | Clallam County Courthouse EOC,<br>223 E. 4 <sup>th</sup> St., PA   | Bill Carter<br>360-681-4375      |
| Clallam County Amateur Radio Club general meeting  | 7 pm, 2d Wed of every month    | Port Angeles Fire Station<br>5th and Laurel, PA                    | Chuck Jones N7BV<br>360-452-4672 |
| Clallam County Amateur Radio Club social breakfast | 8 am, 1st Sat of every month   | Bi-Monthly Joshua's Restaurant,<br>PA & Mariner Restaurant, Sequim | Chuck Jones N7BV<br>360-452-4672 |
| Clallam Country Amateur Radio Club YL social lunch | 11:45 am 2d Fri of every month | Rotates - announced on Thursday<br>night Net (See QTC Newsletter)  |                                  |

[CC-ARC Welcomes New Members](#)**CLUB OFFICERS For 2017****President: Dennis Tilton AD7TV 360-452-1217 ad7tv@wavecable.com****Vice President: Mark Ellington KI7DWE 801-821-1888 gossamer765@gmail.com****Secretary: Mike Rice KF7VZZ (360) 912-2395 kf7vzz@gmail.com****Treasurer: Sheldon Koehler, N7XEI (360) 457-3029 sheldonk@gmail.com****Board Member (Chairman): Herm Halbach III, KG7WMZ (360) 504-2226  
hermhalbach@centurylink.net****Board Member: Paula Johnson K7PAX, 360-461-2425, hamette@hushmail.com****Board Member: TBD**